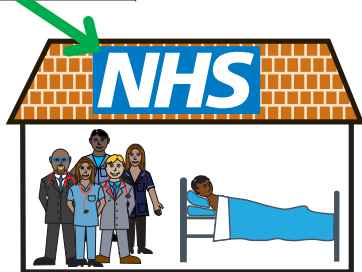
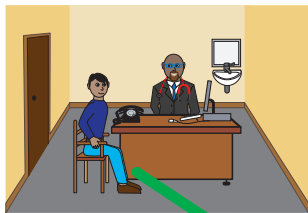


Re opening outpatients



Your GP can refer you to hospital.

The hospital is a bit different at the moment.

This is because of the Coronavirus.

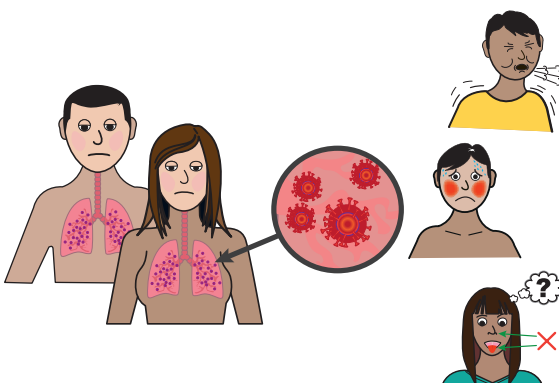


Please contact the Learning Disability and Autism Team if you need help at the hospital.

Telephone: **0113 2066836**

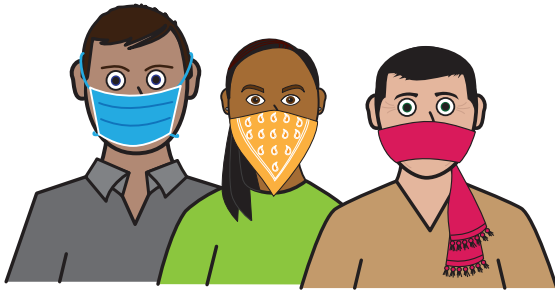
Email: **leedsth-tr.lidautism@nhs.net**

Twitter: **@getmebetter**



If you have the symptoms of Coronavirus or if you are shielding then please do not come to hospital.

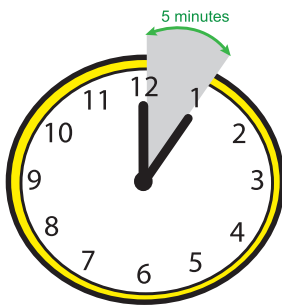
Please call the booking team telephone number on your outpatient appointment letter.



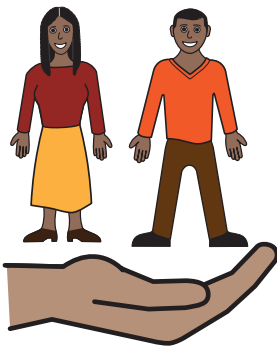
In hospital you must wear a mask or face covering.



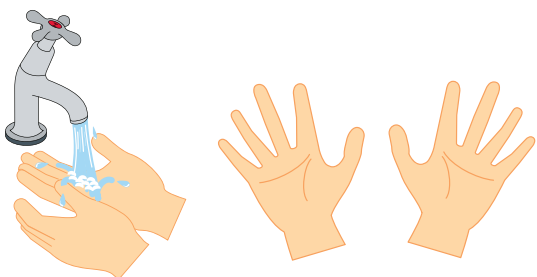
You must keep social distancing whilst you are in the hospital



Please only arrive 5 minutes before your appointment.



You can bring a carer with you.



Please wash your hands for at least 20 seconds before you come to hospital.
Use hospital sinks to wash your hands when you arrive or alcohol gel